

# RouteFinder™ VPN

## Internet Security Appliance



### Benefits:

- Secure IPSec and PPTP VPN
- Strong 168-bit 3DES encryption
- Stateful Packet Inspection Firewall
- E-mail Anti-virus protection
- Content filtering

The RouteFinder Internet security appliances are integrated VPN gateways/firewalls designed to maximize network security without compromising network performance. They use data encryption, user authentication and the Internet to securely connect telecommuters, remote offices, customers or suppliers to the corporate office while avoiding the cost of private leased lines or dial-up charges. The browser-based interface eases configuration and management. The VPN functionality is based on IPSec and PPTP protocols and uses Triple DES 168-bit encryption to ensure that your information remains private. The RouteFinder firewall security utilizes Stateful Packet Inspection, and provides content filtering, as well as optional e-mail anti-virus protection.

*VPN Gateway/  
Firewall for Secure  
Communications over  
the Internet*

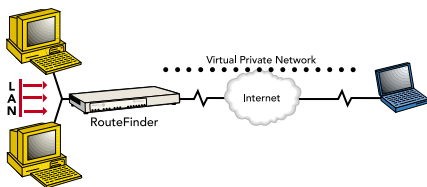
### Features

- Supports IPSec and PPTP VPN tunneling
- Utilizes 168-bit Triple Data Encryption standard (3DES)
- Built-in Stateful Packet Inspection firewall with Network Address Translation (NAT)
- Free one-year content filtering subscription
- Automatic dial-backup with built-in modem (RF660VPN) or via an external dial-up modem or ISDN terminal adapter
- Automatic system updates to protect your network against the latest threats
- Application layer security using SMTP, POP3, HTTP, DNS and SOCKS proxies
- Caching server improves Web surfing performance
- Secure local or remote management using HTTP, HTTPS or SSH
- Reporting function provides valuable troubleshooting information
- Three built-in 10/100 Ethernet ports (LAN, WAN, DMZ)
- Shared broadband or dedicated Internet access for up to 255+ LAN users with one IP address
- Internet access control tools provide client and site filtering
- Traffic monitoring and reporting
- IP address mapping/port forwarding and DMZ port
- Two-year warranty

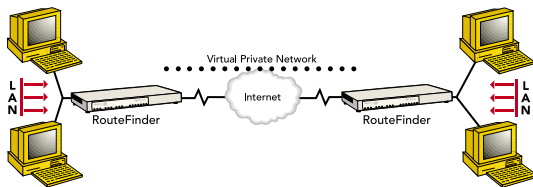
## Highlights

**RouteFinder Applications.** The RouteFinder combines Virtual Private Networking (VPN), firewall, e-mail anti-virus protection\* and content filtering in one box. It is a cost-effective, easy to manage solution that is ideal for the small to medium business looking to add one or all of the following applications to their network:

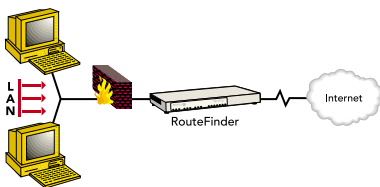
**Remote User VPN.** The client-to-LAN VPN application replaces traditional dial-in remote access by allowing a remote user to connect to the corporate LAN through a secure tunnel over the Internet. The advantage is that a remote user can make a local call to an Internet Service Provider, without sacrificing the company's security, as opposed to a long distance call to the corporate remote access server.



**Branch Office VPN.** The LAN-to-LAN VPN application sends network traffic over the branch office Internet connection instead of relying on dedicated leased line connections. This can save thousands of dollars in line costs and reduce overall hardware and management expenses.



**Firewall Security.** As businesses move toward always-on broadband Internet connections, the network becomes more vulnerable to Internet hackers. The RouteFinder provides a full-featured Stateful Packet Inspection firewall to provide security from intruders attempting to access the office LAN.



**E-mail Anti-Virus Protection.** An optional e-mail virus protection subscription ensures the network is protected against the latest virus outbreaks.

**Content Filtering.** A free, one-year URL content filtering subscription allows you to automatically manage what Web content is available.

**Plug-and-Play Security Appliance.** The RouteFinder plugs in at the Internet connection of each office. It provides three independent network interfaces (LAN, WAN and DMZ) that separate the protected office network from the Internet while offering an optional public network for hosting Web, e-mail or ftp servers. Each network interface is independently monitored and visually displayed on the front of the RouteFinder.

**Secure VPN Connections.** The RouteFinder uses IPSec and PPTP industry standard protocols, data encryption, user authentication, and the Internet to provide high-performance, secure VPN connections. For LAN-to-LAN connectivity, the RouteFinder utilizes the IPSec protocol with strong 168-bit 3DES encryption using IKE and PSK key management. In addition, it provides very high performance with 15M bps of 3DES encryption throughput (3M bps with the RF600VPN).

For client-to-LAN connectivity, Multi-Tech provides optional IPSec client software. The RouteFinder also supports remote users that want to use the PPTP VPN client built into the Windows operating system. This provides 40-bit or 128-bit encryption, user name and password authentication.

**State-of-the-Art Firewall Security.** The RouteFinder provides network layer security utilizing Stateful Packet Inspection, the sophisticated firewall technology found in large enterprise firewalls, to protect the network against intruders and Denial of Service (DoS) attacks. It also uses Network Address Translation (NAT) to hide internal, non-routable IP addresses and allows internal hosts with unregistered IP addresses to function as Internet-reachable servers.

In addition to network layer security, it provides application level security using SMTP, HTTP, DNS and SOCKS proxies. The RouteFinder also utilizes filters to block specific Internet content to protect against viruses, dangerous ActiveX controls, Java, Javascript, and Cookies. An automatic update feature provides the highest level of security by automatically downloading and installing the latest system software and security patches protecting against any newly discovered hacker attacks with a single click.

**Content Filtering.** The RouteFinder includes a one-year URL content filtering subscription. It utilizes SurfControl®'s content categorization list, the world's largest database of Internet content, which includes 5 million Web sites covering over 900 million Web pages. Daily updates of categorized sites are available for download. In addition, it includes URL access and deny reporting. The subscription can easily be renewed on an annual basis.

\* Optional yearly subscription.

**E-mail Anti-Virus Protection.** Computer viruses are one of the leading security threats to Internet-connected networks. Users can unknowingly download and launch dangerous viruses that can damage data or cause computer crashes. Viruses can also be used as delivery mechanisms for hacking tools, compromising the security of the network, even if a firewall is installed.

An optional e-mail virus protection subscription utilizes a high-performance, ICSA-tested, anti-virus engine which checks both incoming and outgoing e-mail for viruses in real-time. Automatic anti-virus updates are downloaded at user-defined intervals to ensure protection is current. The e-mail anti-virus protection can be easily renewed on an annual basis. Ask about our free 30-day evaluation.

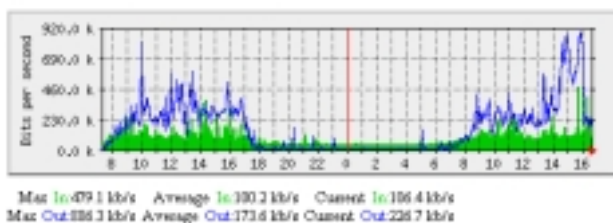
**User Authentication.** To increase the level of security, user identity can be verified before access to Internet services is permitted. The RouteFinder supports authentication at a local user database as well as at external user databases, like Windows 2000 or Radius server.

**Web Caching Server.** To enhance performance, the RouteFinder also provides web caching. By storing frequently visited web sites on a local drive, web surfing performance can be improved by as much as 50%.

**Robust, Easy-to-Use Management.** The RouteFinder includes robust management support allowing a network administrator to securely manage the devices either through a web browser or at the command line. The browser-based option uses the HTTP or HTTPS protocol, also known as SSL (Secure Sockets Layer) to provide 128-bit encryption to secure the management session. The command line interface is accessible via SSH (Secure Shell) and supports SCP (Secure Copy).

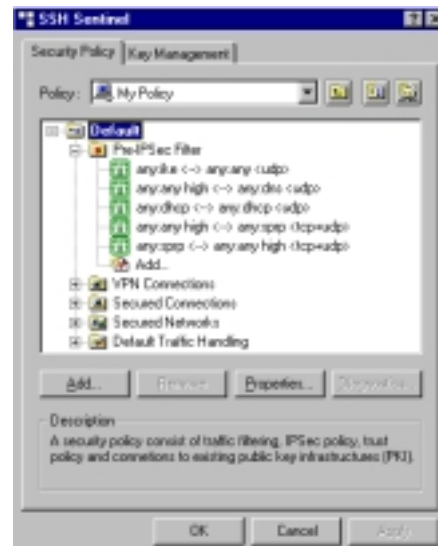
**Reporting.** The RouteFinder also includes a suite of integrated monitoring and reporting tools that help administrators troubleshoot the Internet security system and report to management the usage of the Internet. This includes reporting on system uptime, hardware and network utilization. HTTP and SMTP proxy reports provide information about any actions needed to handle virus-infected e-mails. The RouteFinder also disables and logs attempted port scans. In addition, it provides accounting reports and a self-monitor that sends an e-mail notification of system-level issues.

Daily Graph (5 Minute Average)



**Automatic Dial Backup.** The RouteFinder provides a serial port that, when connected to a dial-up modem or ISDN terminal adaptor, can serve as a backup resource for Internet access and VPN tunneling if your cable or DSL service goes down. In addition to the serial port, the RouteFinder RF660VPN model includes a built-in modem.

**Optional VPN Client Software.** Multi-Tech provides an easy-to-use IPSec VPN client software that transparently secures Internet communications anytime, anywhere. VPN client software is ideal for business users who travel frequently or work from home. It provides secure remote access through the RouteFinder VPN gateway for applications such as remote access, file transfer, e-mail, Web browsing, messaging or IP telephony. Encryption and authentication operations are completely transparent to the end user. In general, IPSec provides stronger encryption than PPTP resulting in better overall security.



**SOHO RouteFinder.** The SOHO RouteFinder is ideal for the small branch office or telecommuter who needs secure access to the corporate LAN. In addition to providing a WAN Ethernet port for DSL or cable broadband Internet access, it also offers both client-to-LAN and LAN-to-LAN VPN connectivity based on the IPSec protocol. It supports up to 5 IPSec tunnels and provides 3DES encryption with 700K bps throughput. Go to [www.multitech.com/products/](http://www.multitech.com/products/) for more details.

**Comprehensive Service and Support.** The Multi-Tech commitment to service means we provide a two-year product warranty and service that includes telephone technical support, 24-hour web site and ftp support.

Features	RF660VPN	RF600VPN
<b>Appliance</b>		
Ethernet Ports	3 x 10/100BaseT (LAN, WAN, DMZ)	3 x 10/100BaseT (LAN, WAN, DMZ)
Number of Network Users	Unlimited	Unlimited
Rackmount/Standalone	Yes	Yes
<b>VPN Features</b>		
Remote User (Client-to-LAN)	Yes	Yes
Branch Office (LAN-to-LAN)	Yes	Yes
3DES Encryption (168-bit)	Yes	Yes
3DES Throughput	15M bps	3M bps
IPSec VPN	Yes	Yes
IKE	Yes	Yes
Recommended Number of Tunnels (IPSec)	50	25
PPTP VPN (40-bit/128-bit)	Yes	Yes
Recommended Number of Tunnels (PPTP)	50	25
<b>Firewall Features</b>		
Throughput	80M bps	20M bps
Anti-Virus Option	Yes	Yes
Content Filtering	Yes	Yes
Application Proxies	Yes	Yes
Port and IP Filtering	Yes	Yes
Denial of Service Protection (DoS)	Yes	Yes
Stateful Packet Inspection	Yes	Yes
Network Address Translation (NAT)	Yes	Yes
Web Caching	Yes	Yes
Virtual Server	Yes	Yes
Port Scan Detection/Notification	Yes	Yes
Intrusion Detection/Notification	Yes	Yes
H.323 Pass Through	Yes	Yes
<b>Management Features</b>		
E-Mail Alerts	Yes	Yes
Local and Remote Management	Yes	Yes
Logging	Yes	Yes
Reporting	Yes	Yes
Web Based (HTTP, HTTPS/SSL)	Yes	Yes
Secure Shell (SSH)	Yes	Yes
Syslog	Yes	Yes
<b>Other Features</b>		
Shared Internet Access	Yes	Yes
Automatic Dial-backup	Yes	Yes
Integrated Modem	Yes	No
PPPoE	Yes	Yes
DHCP Client/Server	Yes	Yes
User Authentication (Web Access)	Yes	Yes
Automatic Firmware Downloads	Yes	Yes
Warranty	2-years	2-years
<b>Specifications</b>		
Power	100-240v AC, 50/60Hz	100-240v AC, 50/60Hz
Physical Description	17" w x 1.7" h x 10.5" d; 10 lbs. (IU rack mountable) (43.18 cm x 4.4 cm x 26.6 cm; 4.5 kg.)	12" w x 1.7" h x 8" d; 5.8 lbs. (30.4 cm x 4.4 cm x 20.3 cm; 2.6 kg.)
<b>Operating Environment</b>		
Temperature Range	32° - 120° F (0° - 50° C)	32° - 120° F (0° - 50° C)
Humidity	25-85% noncondensing	25-85% noncondensing
Approvals	FCC Part 68, FCC Part 15 (Class A), CE Mark, UL60950	FCC Part 15 (Class B), CE Mark, UL60950

## Ordering Information

Product	Description	Region	Product	Description	Region
RF660VPN*	Internet Security Appliance	Global	RFAVUPG-660	1-Year Anti-virus Upgrade (RF660VPN)	Global
RF600VPN*	Internet Security Appliance	Global	RFAVUPG-600	1-Year Anti-virus Upgrade (RF600VPN)	Global
RFIPSC-1	IPSec VPN Client-1 User	Global	RFCFUPG-660	1-Year Content Filtering Renewal (RF660VPN)	Global
RFIPSC-5	IPSec VPN Client-5 User	Global	RFCFUPG-600	1-Year Content Filtering Renewal (RF600VPN)	Global
RFIPSC-10	IPSec VPN Client-10 User	Global	Made in Mounds View, MN, U.S.A.		
RFIPSC-50	IPSec VPN Client-50 User	Global			

\* These products may have country specific versions for regions not listed.  
Specify country when ordering.

**Trademarks:** RouteFinder, Multi-Tech, and the Multi-Tech logo: Multi-Tech Systems, Inc. / All other products or technologies are the trademarks or registered trademarks of their respective holders.

**World Headquarters**  
Tel: (763) 785-3500  
(800) 328-9717

[www.multitech.com](http://www.multitech.com)

**Multi-Tech Systems (France)**  
Tel: +(33) 1 64 61 09 81

**Multi-Tech Systems (UK)**  
Tel: +(44) 118-959 7774

